

A Word From GPLN



Dear Reader,

The heavy-lift market is growing rapidly which is a positive sign for our GPLN members. Driven by a worldwide increase in large-scale infrastructure projects and the rapid expansion of the renewable energy sector, particularly offshore wind farms are high in demand. Since wind turbines and their components (nacelles, blades, foundations) are increasing in size and weight, they require highly skilled project forwarders, like our members, to handle specialized vessels and lifting gear for transportation and installation.

Furthermore, a worldwide building boom for new bridges, high-speed rail networks, massive factories, and port modernization, makes the movement of oversized and heavy equipment and prefabricated modules necessary. The Asia-Pacific region is emerging as a major market and is the fastest-growing area due to rapid industrialization and extensive infrastructure projects. The International Energy Agency (IEA) released recently the 2025 edition of its World Energy Outlook (WEO), with in-depth assessment of global energy trends across several policy scenarios. In particular, a group of emerging economies; led by India and Southeast Asia, as well as the Middle East, Africa and Latin America; will increasingly shape energy market dynamics.

As you know, our next Annual General Meeting will take place from June 12–14, 2026 at the Hilton Hotel in Rotterdam, just ahead of Breakbulk Europe in Rotterdam which is scheduled from June 16–18, 2026. We have chosen these dates that delegates can combine both events. Up to now we have already received over 50 registrations and are therefore expecting again a high attendance of around 200 delegates which will be a great opportunity for networking during our one-on-one meetings and social events. More details and delegate registration for GPLN members are available on our dedicated website: <https://gpln.net/agm-2026/>

Furthermore, GPLN members from 10 different countries will be also sharing our large stand at Breakbulk Europe in Rotterdam, which will be another great opportunity for networking among fellow members and over 11'000 visitors.

However, the next upcoming exhibition, Breakbulk Middle East, will take place from February 4–5, 2026 at WTC in Dubai. Following GPLN companies are sharing our GPLN booth G13 in Hall 7 and will be pleased to meet you: Al Jassim Freight/Saudia Arabia, Fischer & Rechsteiner/Italy (ex BCUBE), Head-seaway International Logistics/China, Indial Shipping/India, JSL Global/Qatar, and NMT Group/Turkey.

Finally, GPLN secured also a stand at the new Breakbulk Asia event in Singapore which is scheduled from November 18–19, 2026. We still have a few spots available for GPLN members who wish to share our booth. Please contact us for more details and prices.

Best regards,
Your GPLN Team

Go Gauge Logistics handles Breakbulk Shipments



GPLN member Go Gauge Logistics from India recently executed a door-to-door breakbulk shipment of 16 units forming part of a Sugar Mill Plant from Mumbai, India to Semarang, Indonesia, with a total volume of 3000 FRT.

The operation demanded careful coordination to ensure smooth cargo collection, port stevedoring, vessel chartering, and the on-schedule delivery of components in Indonesia.

From pre-planning to final discharge, our team ensured every stage met the highest standards of safety, documentation, and operational excellence – showcasing Go Gauge’s capability to handle project cargo across diverse trade lanes. With a strong presence in India, Go Gauge Logistics continues to support industrial and manufacturing projects with seamless door-to-door and port-to-port solutions. When reliability, precision, and performance matter – Go Gauge delivers.

In another move, Go Gauge Projects has once again showcased its engineering excellence in project logistics by successfully executing the door-to-door movement of an XDR 250 Workover Rig and associated oilfield equipment from Ras Al Khaimah, UAE, to India.

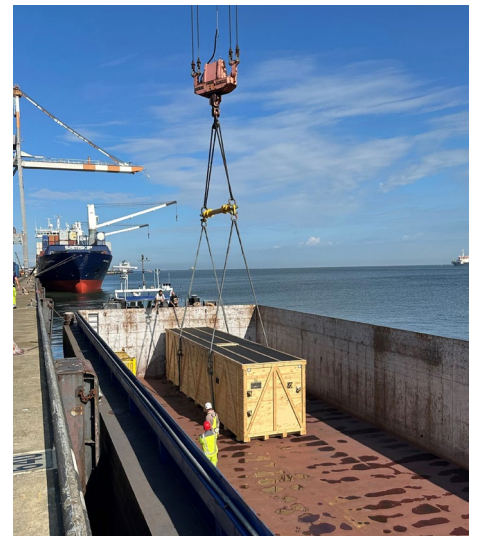
The complex operation involved a self-propelled workover rig, catwalks, dismantled booms, pipe magazines, and ladders, loaded across multiple MAFI trailers for shipment and loaded a RORO vessel. Cargo measured up to 18 meters long and 5 meters wide, requiring precision lashing, wooden dunnage arrangements, and specialized rigging during dismantling.

Go Gauge’s team managed complete execution, including cargo survey, dismantling supervision, MAFI handling, port coordination, and temporary import clearance in India – ensuring safe, compliant, and on-time delivery.

This achievement reinforces Go Gauge Logistics Group’s position as a trusted partner for Oil & Gas and Energy projects, delivering engineered logistics solutions were precision and reliability matter most.



CONTI-TRANS handles Heavy Loads to India



During the months of September and October 2025, GPLN member Conti-Trans from Germany successfully handled Heavy Loads to India for the automotive industry. The two wooden boxes; one @11.88 x 2.70 x 2.75 m, 65,000 kgs and another one @ 5.25 x 5.15 x 1.25 m, 55,000 kgs; were originated in the Baltic states, from where it was brought by feeder charter vessel to the Port of Hamburg.

From there it was transhipped onto a Ro-Ro/ Break Bulk vessel with the destination to India. With some delay, due to some unforeseen circumstances like bad weather conditions and an unplanned but mandatory repair of the booked vessel and therefore also an unexpected additional transshipment at Antwerp Port, the cargo was loaded to its final destination in India.

A big "thank you" to our customer and all trusted partners, who were involved in this shipment and at the end made it a successful story.

We are looking forward to the next projects and remain at the disposal of all our global partners & customers at any time!

New GPLN Members / November – December 2025

Canada

Mississauga

FCL Fisker Customs & Logistics

Turkey

Istanbul

NMT Logistics

Falcon & Transmaritim Move Oversized Thermal Oil Heater



The original shipper entrusted GPLN member Falcon Int'l / America through its GPLN overseas partner, transmaritim international from Germany, to handle a complex inland transport operation. The task: deliver an oversized thermal oil heater arriving from Germany to its final destination in Michigan. Falcon's Project Cargo division took the lead on this heavy-haul movement, coordinating the operation from port pickup to site delivery. Under the direction of Daniel Hradetzky, Project Lead, the shipment was completed on budget, with constant communication and real-time GPS tracking, ensuring total transparency throughout the journey.

Transporting an oversized load measuring 1.12 x 40.2 x 4.23 m and weighing 50,000 kg required meticulous planning. This super load demanded specialized permits, escort coordination, and

equipment capable of managing extreme dimensions and weight.

Falcon deployed an extendable lowboy trailer to ensure optimal balance and clearance. Due to the heater's height, state police escorts and bucket trucks were required to lift overhead wires along the route from Port Newark, NJ, to Grayling, MI. Every step of the move was strategically timed to comply with local transit restrictions and minimize disruption.

A flat tire immediately after leaving the port disrupted the schedule, requiring swift adjustments. This unplanned event led to a cascade of re-coordination with police escorts, bucket truck crews, and destination rigging teams. Falcon's proactive communication and 24/7 oversight were key to maintaining control. The team rapidly rescheduled each partner while keeping both the overseas agent and consignee informed in

real time. This prevented costly idle time at the destination and preserved the project's timeline.

Falcon managed every aspect of the unexpected delay with composure and care. Through constant monitoring, stakeholder coordination, and transparent reporting, the team minimized the ripple effect of the incident.

Updates were shared continuously with Transmaritim Int'l and the receiver's rigging crew, ensuring alignment across all moving parts. This seamless communication flow not only averted extra costs but also strengthened trust between all parties.

This success stems from a long-standing partnership between Transmaritim Int'l and Falcon America, built on trust, consistency, and shared values.

Beyond operational expertise, Falcon's local leadership brought an added advantage—Project Lead Daniel Hradetzky, born, raised, and educated in the same region of Germany as the shipper and agent, provided cultural fluency and technical precision that reinforced mutual confidence. The project concluded successfully with a damage-free delivery that met the adjusted schedule and budget. Falcon's precision-driven approach and its focus on partnership exemplified its commitment to "Getting it Right. Every Time."

This case underscores Falcon's ability to handle complex, high-stakes heavy-haul operations through ingenuity, care, and unwavering reliability.

TSL contributes to West Gate Tunnel Opening in Melbourne



GPLN member TSL Australia is excited to announce that the West Gate Tunnel in Melbourne is set to open at the end of the month of December 2025!

One of its striking new landmarks is the "Eel Nets" arches, which you will be able to spot gracing the skyline.

At TSL Australia, we are proud to have managed the sea freight and several part-charters that brought these massive arches to their new home. It's been a privilege to play a role in such a landmark piece of Melbourne's future infrastructure!

Hot Air Balloons Bagan, Myanmar



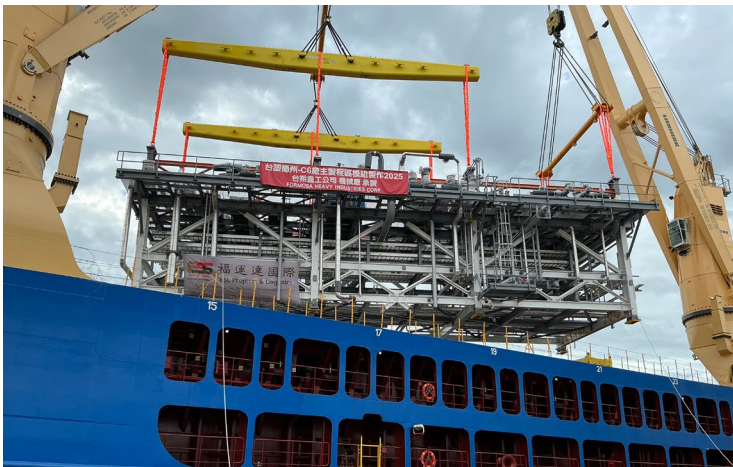
THE SKY IS THE LIMIT

**WHEN IT MATTERS –
WE RISE TO THE OCCASION**

THE ⁺**FREIGHT**
CO., LTD.

AIR FREIGHT | SEA FREIGHT | TRUCKING | CUSTOMS BROKER |
WAREHOUSING | DISTRIBUTION | PROJECT LOGISTICS SERVICES
AND EQUIPMENT RENTAL FOR OIL | GAS | POWER | MINING |

FSL Projects & Logistics move Heavy-Lift and Oversized Cargo



GPLN member FSL Projects & Logistics Co., Ltd., headquartered in Taiwan, recently completed Project C6 for Formosa Plastics Corporation – a large-scale heavy-lift and oversized cargo movement from Mailiao, Taiwan to Point Comfort, Texas (USA).

The project scope included 275 packages totaling 38,437 cubic meters of cargo. Among these were 12 large prefabricated modules, the largest measuring 33.03 m (L) x 14.02 m (W) x 9.49 m (H) and weighing 247 metric tons. The operation, covering FSL's offshore execution scope, spanned from May to October 2025 and involved six full and part-chartered BBC vessels – BBC Eagle, BBC Rostov, BBC Houston, BBC Switzerland, BBC Manila, and BBC São Paulo.

FSL assembled a dedicated project team to oversee the end-to-end execution, including cargo position planning, port interface coordination, heavy-lift supervision, chartering support, customs clearance, and discharge operations at the destination.

Formosa required that all modules and project equipment be stowed under deck and remain unstacked, a condition that imposed strict space and stability limitations. To satisfy these requirements, the FSL engineering team designed and fabricated tailor-made spreader beams and lifting systems to safely handle the project's super-length and over-width modules.

This meticulous approach ensured safe loading, secure under-deck stowage, and efficient discharge – despite challenging sea conditions, high waves, and heavy rainfall during the shipment window.

Due to the value and delicate structural characteristics of the modules, Marine Warranty Surveyors (MWS) were engaged at both the loading port in Mailiao and the discharge port in Point Comfort to supervise lifting, securing, sea fastening, and final offloading operations in accordance with class and safety compliance requirements.

Executing a project of this magnitude demanded seamless coordination among FSL's project team members, Formosa's representatives, the BBC Chartering team, and port captains. Continuous communication across time zones kept the operation on schedule and fully compliant with the client's strict safety standards.

FSL's "Logistic Architects" demonstrated their hallmark attention to detail, ensuring every module was transported safely, on time, and without incident.

Supported by a trusted international partner network, FSL continues to deliver complex heavy-lift and industrial projects with precision and professionalism. Project C6 stands as another milestone underscoring FSL's ability to manage any complex project, anywhere in the world, with utmost precision and efficiency.

Quantum Logistics ships Vibrating Screens and Rotary Screens

GPLN member Quantum Logistics from Brazil was nominated by an overseas partner to coordinate the shipment of two industrial machines, Vibrating Screens and Rotary Screens, from Santos, Brazil to Callao, Peru. The equipment, intended for use in the industrial maintenance and fabrication sector, was shipped in 2 x 40' Flat Racks OOG, with dimensions of 8.25 x 2.45 x 1.15 m and 6.20 x 3.43 x 2.70 m.

The operation, performed in September 2025, covered the complete end-to-end logistics, including collection of the bulk cargoes from the supplier's facilities using flatbed trucks, loading and lashing operations at a partner terminal, technical load & lashing surveyor, issuance of lashing certificates, and coordination of ocean freight to the final destination in Callao.

Our team once again reinforced its expertise in project cargo management, ensuring the highest standards of safety, efficiency, and reliability throughout the transportation of special cargoes.



Navigators Executes Landmark Project Cargo Movement



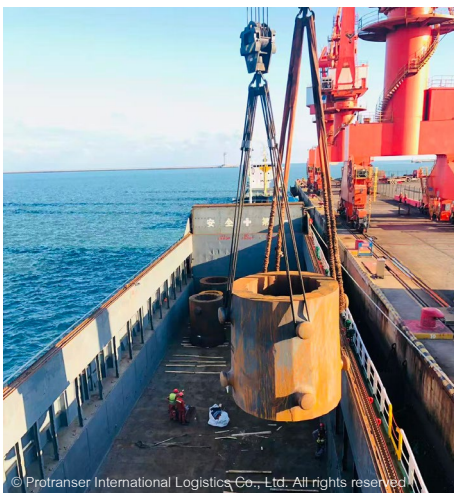
The consignment comprised dismantled crawler crane components, which demanded meticulous planning, expert handling, and precise coordination across multiple stages of the supply chain. Leveraging the team's deep understanding of complex project logistics, the operation employed a mix of 31 Containers – flat rack, open top, and high cube containers to ensure the safe and efficient movement of the cargo.

"Our Projects Division continues to raise the bar in handling oversized and complex industrial movements," said a spokesperson from Navigators Industrial projects division. "This successful execution underlines our commitment to operational excellence and our proven capability in delivering specialised logistics solutions that meet the most demanding industrial requirements."

With this achievement, Navigators has once again demonstrated why it remains the partner of choice in the UAE for complex and heavy-lift project cargo movements, offering end-to-end solutions marked by reliability, precision, and professionalism.

G PLN member Navigators from UAE executes landmark project cargo movement from Singapore to Jebel Ali. In a remarkable display of engineering precision and logistical expertise, the Navigators Projects Team has successfully executed a landmark project cargo movement, transporting 240 tonnes of heavy machinery and equipment from Singapore to Jebel Ali, UAE.

PROTRANSER handles various projects



© Protranser International Logistics Co., Ltd. All rights reserved

G PLN member PROTRANSER's team delivered 6 sets of transformers from China to West Africa by 4 lots. 4 sets of them were transported by RORO vessel from

Wuhan with a weight of the main bodies ranging from 65 tons to 86 tons; and another 2 sets of them were transported by container vessel from Shanghai. Besides these main bodies, various parts were stuffed into 29 different types of containers.

The working scope included: 1. Pick-up from the factory (Shanghai and Wuhan); 2. stuffing into containers in the warehouse; 3. port services; 4. booking and chartering of the vessel. For this case, the challenge we faced was the height of the cargo; but our advantages we took to deliver this cargo smoothly is our rich experience and close contact and coordination with all parties involved. The original height of the cargo drawing was below 4m, which had to be updated twice to 4.1m and 4.15m.

After loading on the Mafi with dunnage, the height reached 4.98m, but since the height of

the RORO vessel hold was just 5m, it was almost impossible to load the cargo. However we kept a close contact with all parties concerned about this new situation, and the shipper decided 2 days before the shipping date to arrange engineers to the port to remove the pressure gauge on the top of the main bodies to reduce the height accordingly. Finally, all cargo was loaded successfully onto the vessel!

In another move PROTRANSER's team delivered 4pcs moulds from Qingdao port in China to Masan port in Korea by breakbulk vessel. The weight of each unit was 93 tons, and the total volume was 4pcs / 372720kgs / 201.4cbm. The working scope included FLT vessel chartering service, export customs clearance, transport insurance, loading & trucking coordination etc.

Total Movements transport Vacuum Tower along the Indian Coastline



GPLN member Total Movements from India won the "Project of the Year" at the HeavyLift Awards 2025 for their execution of a complex float-on, float-off operation. They were selected from a shortlist of eight outstanding projects.

The win highlights the company's commitment to safety, meticulous planning, and innovative solutions for complex logistical demands.

In the remote and challenging terrains of Assam, where traditional road infrastructure limits the movement of massive industrial cargo,

Total Movements is redefining what's possible in heavy-lift logistics. The company is currently executing the complex multimodal transportation of 25 Super ODCs, together weighing over 45,000 freight tons (FRT), for the Numaligarh Refinery Expansion Project – one of India's most ambitious refinery upgrades.

Faced with the near-impossible task of moving colossal equipment through areas unsuitable for conventional road transport, the Total Movements team devised a custom-engineered route that combines road, coastal shipping, and riverine barging via Bangladesh. This innovative corridor not only overcame geographical barriers but also opened new avenues for efficient, cross-border logistics collaboration in the region.

To make this multimodal journey possible, the project scope expanded beyond conventional logistics. The team implemented vessel conversions, barge reinforcements, and even constructed dedicated jetties and a 1,550 MT – capacity bridge – a testament to the company's commitment to precision engineering and safety.

Despite navigating through complex terrain, dynamic river conditions, and intricate cross-border regulations, the project continues to progress safely, efficiently, and on schedule. Every milestone achieved underscores the synergy of innovation, planning, and technical excellence that defines Total Movements' approach.

This operation not only demonstrates the company's capability in handling some of India's largest and most challenging heavy-lift movements but also sets new benchmarks for multimodal logistics across South Asia. Through this project, Total Movements reinforces its position as a pioneer – transforming logistical challenges into opportunities for engineering brilliance.



Polaris Projects executes Project Shipment



Polaris Projects, the specialized project logistics division of GPLN member Polaris Shipping Agencies LLC, UAE, has successfully executed a project shipment to Europe.

One of the major challenges of this move was the time-sensitive nature of the shipment, with a strict delivery deadline compounded by transshipment delays and the over-dimensional nature

of the cargo. The operation demanded innovative planning and precise coordination to ensure seamless multimodal delivery within the allotted timeframe.

The OOG shipment comprised six pieces, each measuring 13.00 x 3.65 x 4.60 meters and weighing approximately 45 MT. The cargo was safely loaded as Break Bulk on a container vessel, utilizing multiple flat racks that were lashed and secured under the strict supervision of our nominated surveyors.

Despite the logistical complexities, Polaris Projects successfully completed the delivery on schedule, meeting and exceeding the expectations of all stakeholders involved.

We extend our sincere appreciation to our partners, clients, and stakeholders for their continued trust and support in making this project a success.

Trans International Logistik delivers complex equipment



GPLN member Trans International Logistik (TIL), based in Malaysia, has marked an impressive and eventful 2025, driven by strong performance in the Renewable Energy (RE) sector. With multiple large-scale RE projects running concurrently across the country, TIL has demonstrated outstanding project cargo capabilities, delivering complex equipment under tight schedules while ensuring cost efficiency and safety for its clients.

Backed by a highly experienced operations team, TIL continues to reinforce its reputation as a trusted logistics partner for the RE industry—managing end-to-end transport solutions, vessel chartering, port operations, and challenging inland deliveries across diverse terrains.

Project 1: 100MW / 400MWh Battery Energy Storage System (BESS) Power Plant

Location: PMU 132KV, Terengganu, Malaysia

Cargo: 114 units of batteries (43 tons each) / Transformers (16 tons each)

Scope: Vessel charter from China to Kuantan Port

Port discharge and storage / Inland delivery to project site (approx. 120 km)

Despite persistent bad weather, TIL successfully discharged all cargo within three days, coordinating temporary storage and meticulously planning batch deliveries to ensure each unit was placed precisely at its designated foundation. The high-value nature and size of the units required detailed route studies and expert handling, all executed flawlessly.

Project 2: 25MW Kerling Lower Small Hydro Power Plant

Location: Selangor, Malaysia

Cargo: 1 unit of Generator Transformer 600KVa @ 17 tons from India /

Multiple containers of plant equipment's from India

Highlights: Complex inland transportation through deep forest reserves

Careful coordination to reach a remote river-based project site

This delivery demanded specialized route assessments and escort arrangements due to difficult terrain. TIL ensured safe and timely movement through environmentally sensitive areas while meeting the client's construction schedule.

Project 3: 3 15MW Large Scale Solar (LSS) Power Plants

Location: Sabah, Malaysia

Cargo: 225 containers of PV solar panels, mounting structures, transformers, and inverters from China

Execution: Multi-port handling at Kota Kinabalu and Sandakan

Precise coordination of deliveries to three separate project sites

TIL successfully managed staggered shipments and synchronized deliveries, ensuring uninterrupted construction progress across multiple LSS sites.

Project 4: 3 45MW Large Scale Solar Power Plants

Location: Kedah and Perak, Malaysia

Cargo: 650 containers of solar panels, transformers, inverters, and mounting structures from China

Execution: Multi-batch coordination from Penang Port to three project locations

The scale of this project required extensive schedule planning, container staging, and on-time land logistics, all executed seamlessly by TIL's project team.

Project 5: 50MW Large Scale Solar Power Plant

Location: Selangor, Malaysia

Cargo: 250 containers of solar panels and associated equipment from China

Execution: Planned batch shipments from Port Klang to the project site

TIL once again demonstrated efficiency through careful coordination of deliveries, ensuring smooth progress for the client's construction timeline.

Driving Malaysia's Renewable Energy Transformation

Through these major RE logistics undertakings, Trans International Logistik continues to play a pivotal role in Malaysia's transition to cleaner energy.

By combining industry expertise, multimodal capabilities, and project-driven precision, TIL ensures reliable transport solutions for the nation's most ambitious energy projects.

TIL's successful execution across diverse RE segments – BESS, hydro, and solar – underscores the company's commitment to innovation, safety, and superior client service



IFE completes Heavy-Lift Transport



GPLN member IFE (Interfreight Engineering) from Korea has successfully completed the heavy-lift transport of two chemical equipment units, each weighing 130 tons, from China to Korea. The shipment included all related accessories and required coordinated handling across multiple operational stages. At the port of load-

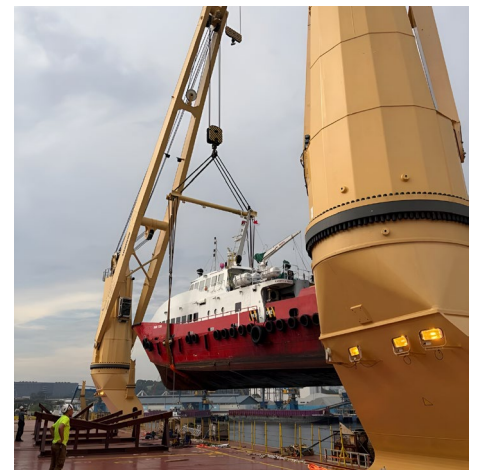
ing, the units were lifted using a heavy-lift crane and secured in accordance with the engineering method statement. Prior to loading, IFE carried out a lifting study, stability review, and stowage planning to ensure compliance with heavy-lift safety standards and to maintain cargo integrity during sea transit. Upon arrival in Korea, IFE supervised the discharging operations and managed the final on-site delivery.

All procedures – from origin handling to marine transport and final positioning – were executed without incident under close project control.

This operation demonstrates IFE's capability in managing heavy-lift and oversized cargo and reinforces its role as a specialized project logistics provider delivering predictable, safe, and reliable transport solutions.



PNI Logistics loading massive crew boat



GPLN member PNI Logistics LLC from UAE successfully completed the loading of a 160 MT crew boat from Singapore to Port Rashid, UAE, managing the full operation. The vessel measured 40.7 m in length, 7.6 m in breadth, with a weight of 160 tons.

For this project, we chartered the heavy lift vessel, prepared the cradle and lifting drawings, hull strength analysis, manufacturing of the cradles and arranged all local operations including divers. Every technical and operational factor was carefully verified to guarantee a safe, smooth, and flawless execution.

Punto completes RORO Shipment



Another successful Ro-Ro shipment completed by GPLN member Punto System from Italy!

We managed recently the sea transport of an oversized semi-finished tank trailer, a towable unit requiring high-precision handling during loading onto the low-bed truck that carried it to the port.

Dimension: L/W/H: 14.84 x 2.959 x 2.535 m, Net Weight: 5'800 kg, Volume: 111.316 CBM

Thanks to our engineering-driven approach and decades of experience in special cargo & wheeled units, every phase – from loading to port delivery – was executed safely and efficiently.

MFC move Mooring Buoy, Anchors and Shackles



GPLN member MFC Extreme from UAE recently moved a 10-meter-high, 170-ton mooring buoy, accompanied by its 24-ton anchors and 85-ton shackles.

After receiving, storing, and consolidating cargoes at MFC JAFZA facility from various origin points the entire shipment, totalling a massive 1,072 metric tons, was moved in an overnight operation.

This colossal cargo was transported on SPMTs and a 37-trailer-long convoy.

Due to the complexities of this logistical move, MFC was granted special permissions to move the cargo, roads were temporarily closed and modifications were made to the route so that the move could be conducted in the shortest time.

The buoy and its accessories were then placed on the charter vessel, with all customs clearance formalities duly completed as per schedule.

IFE Completes Heavy-Lift and SPMT Transport Operation

IFE (Interfreight Engineering) recently completed a transport operation involving a floating crane heavy-lift and SPMT movement for over-dimensional cargo. The project required coordinated handling from the waterfront to the final job site under strict operational control. At the port, the cargo was lifted by a floating crane in accordance with the approved method statement. IFE conducted advance reviews of lifting parameters, stability requirements, and weather conditions to ensure a safe transfer from vessel to barge. For the onshore movement, the SPMT convoy was mobilized along a pre-surveyed route.

IFE's team carried out a route survey covering turning radius, ground bearing pressure, and clearance checks. Escort teams managed traffic and safety throughout the move. All activities—from the marine heavy-lift to SPMT transport and final positioning—were completed without incident.

The project demonstrates IFE's capability to deliver engineered and reliable solutions for heavy-lift and over-dimensional cargo.



FOX
BRASIL
PROJECT LOGISTICS



Project Logistics Experts

- ✓ Heavy-Lift Handling
- ✓ Multimodal Logistics
- ✓ Engineering
- ✓ Oversized Cargo
- ✓ Route Survey
- ✓ Customs Clearance

Message us
PROJECT@FOXBRASIL.COM

Call us
[\[+55\] 11 3543 0200](tel:+551135430200)

Official Website
WWW.FOXBRASIL.COM

Rua Cuiabá, 229, São Paulo - SP
Brazil, 03183-000

[@foxbrasilfreightforwarder](https://www.instagram.com/foxbrasilfreightforwarder)

